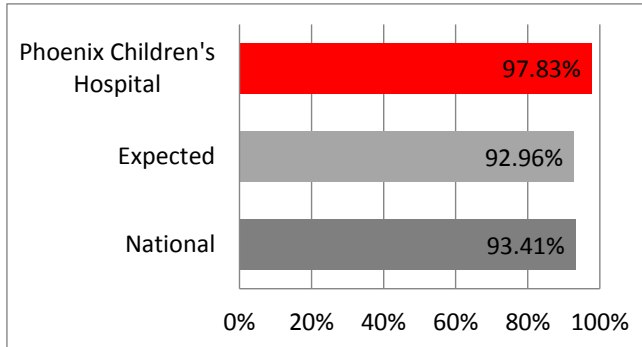




## One-Year Graft and Patient Survival Rates for Heart

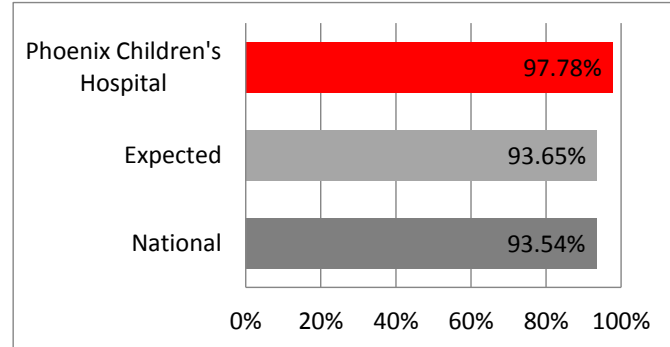
### Heart Graft Survival



#### Graft Survival:

For patients transplanted between 01/01/15 and 06/30/17

### Heart Patient Survival



#### Patient Survival:

For patients receiving their first transplant between 01/01/15 and 06/30/17

The latest reported outcome measures in the SRTR Program-Specific Report comply with Medicare's outcome requirements. For additional information visit the SRTR website at [www.srtr.org](http://www.srtr.org).